

Want to be our Distributor?

Send email to learn more.



www.meaxpert.com



info@meaxpert.com

Item	Jupiter600
X/Y axis travel	80/60
Z axis measuring range	60
Rotation angle	0-90°
Max tool diameter	2~16mm
Max tool length	0~150mm
Working distance	80mm
Lens	Electronic feedback signal zoomlens
CCD	5M pixel digital camera
Linear scale resolution	0.1μm
Magnification	12.6X79.2X/25.2X ~ 140X (optional)
Field of view	27*20mm ~ 43*33mm/13.5*10mm ~ 2.3*1.6mm (optional)
Measuring accuracy	X ~ Y (2.5+L/100) μm, L is the measured length
PC	ALL-IN-ONE PC system, Windows 10 OS, with 24" LCD monitor
Illumination	8 section LED ring light, contour light and flexible auxiliary light, all software control and programmable.
Input format	DXF files
Output format	EXCEL, DXF



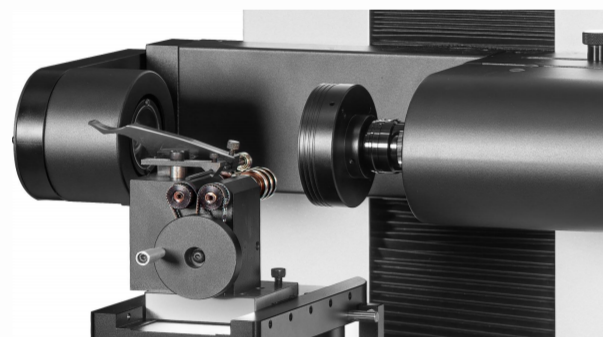
JUPITER



Advantages:

- Ergonomic design and solid construction.
- HD image capturing and display combination, also microscope magnification level is optional.
- Stable and accurate V block for easy tools holding and alignment.
- Mechanical fixed measuring angle of 0 degree and 90 degrees are available on the rotary stage.
- High accuracy encoder is embedded in the rotary table, offers precise angle location for users.

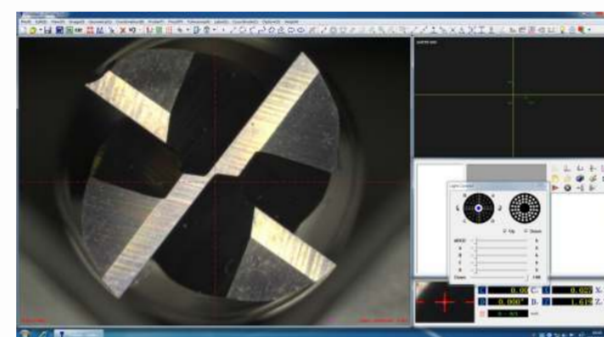
- SMARTOOL measuring software offers specific measuring function for cutting tools.
- Automatic edge detection, fast angle measurement with reticle, CAD element comparison functions are available.
- Measuring result fast output to EXCEL file report or CAD file.
- ALL-IN-ONE PC system makes the machine more stable.



PRODUCT DETAILS ■

Contour light module:

A parallel light path contour LED light module, which offers the best image and sharp edge of the object view to the user.



PRODUCT DETAILS ■

Software:

High resolution image display and graphical operation interface. All function keys and control panel are displayed on the software window.



PRODUCT DETAILS ■

Tool holder:

A multiple section tools holder is embedded at the side of the machine. Users can hold all the tools in order for preparation to avoid confusion.

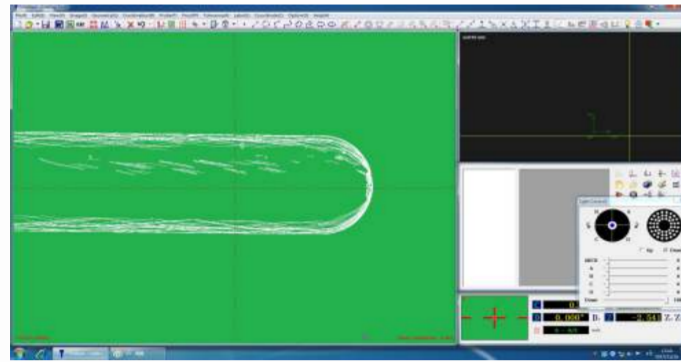


PRODUCT DETAILS ■

Light source:

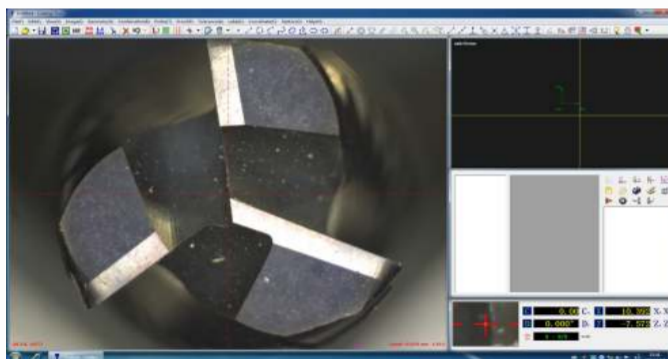
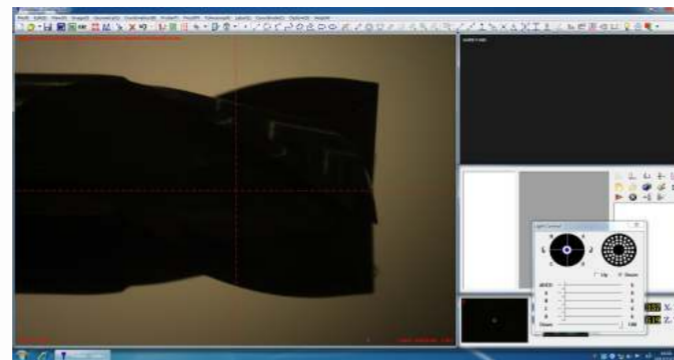
It can be connected to eight-zone upper light source, lifting light, four-color light, and anti-collision light.

Leading Features



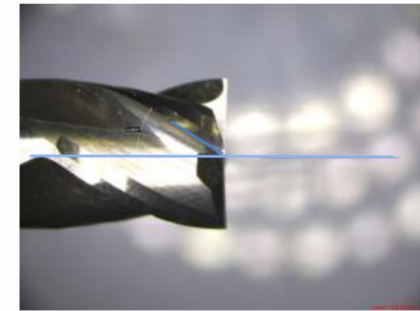
Dynamic real time curve view
 The software offers real time edge detecting curve view, makes the edge analyse and measuring more intuitive and clear. Users are able to switch to the curve view mode at any time during measuring process.

Fast angle measuring with retical
 The reticle displayed in the image area of the SMARTOOL software is freely rotatable and able to display angles. Users can achieve fast angle measuring easily by using the retical for edge comparison.



CAD comparison
 The SMARTOOL measuring software is supporting CAD comparison function. Users can directly input the CAD drawing of the tool to the software as reference, and compare the real image to the drawing to evaluate the geometries of the cutting tools.

Measuring Capability

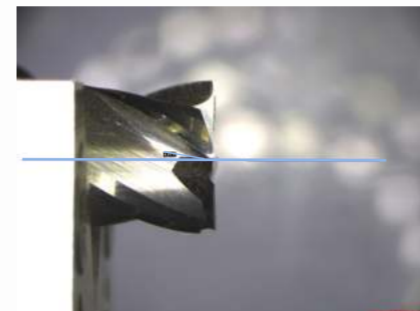


Helix Angle

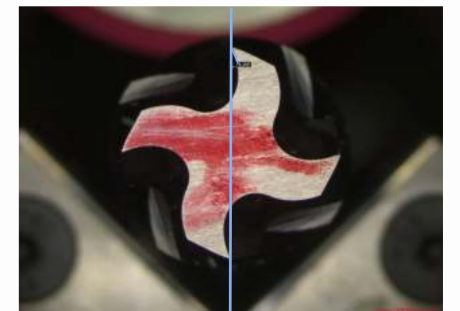


Tool End

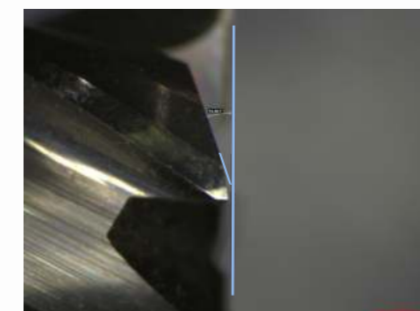
Multi-angle measurement



Axial Front Angle



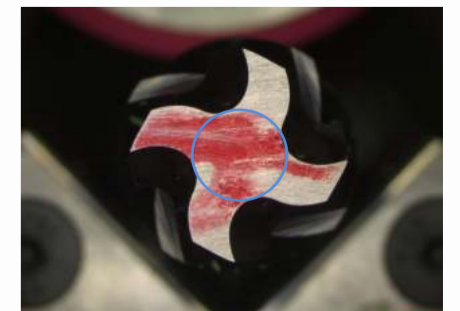
Tool End - Front Angle



First Rear Angle



First Rear Angle



Tool End - Center Shaft



Tilting Edge Angle



Second Rear Angle



Second Rear Angle